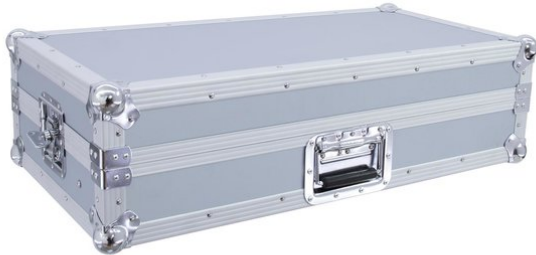


## Mixer case Pro MCB-27, sloping, alu 7U

PRO flightcase for 686 mm devices (27")

**Art. No.:** 30111557

GTIN: 4026397307467



**The article is no longer in our assortment.**

## Mixer case Pro MCB-27, sloping, alu 7U

PRO flightcase for 686 mm devices (27")

**Art. No.:** 30111557

GTIN: 4026397307467

### Features:

---

- Suitable for 686 mm units (27"), e.g. controllers and mixers, with 7 U
- Upward tilted profile rails for top-operated units
- Interior upholstered with foam (black)
- High-quality workmanship with plywood multilayered glued, aluminum-colored laminated
- Aluminum profile frames (25 mm) with rounded edges
- Removable cover
- Three-leg, medium-sized steel ball corners
- 2 high-quality lockable butterfly locks
- 4 steel-enforced rubber feet
- Padded carrying handle
- Screws, rack nuts and washers included (18 pieces each)
- With profile rails suitable for 27" units
- For further information about this product, please refer to the Data Sheet under "Downloads"