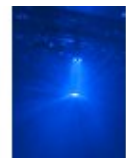
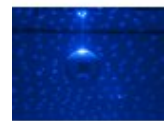


EUROLITE MD-1015 Rotary Motor 3x1W LEDs blue

Motor for mirror balls up to 30 cm with 1.5 RPM

Art. No.: 50301094

GTIN: 4026397543131



The article is no longer in our assortment.

Features:

- Metal housing with 3 blue LEDs which illuminate the mirrorball from above
- Suitable for driving mirror balls up to a maximum weight of 3 kg
- This weight corresponds with a diameter of 30 cm for the EUROLITE mirror balls
- The maximum load always means the mirror ball weight including the mirror ball chain and the fixation material
- 1,5 rotations per minute
- Ready for connection with power plug
- For professional use, e.g. in discotheques and in public places, the EN DIN 15560 norms have to be considered
- The motor always has to be installed with a secondary safety attachment
- Before taking into operation for the first time, the installation has to be approved by an expert
- 3 powerful LEDs 1 W blue (B)
- Suitable for a mirror ball with a diameter of up to 30 cm

Package contents

- 1 x motor, 1 x user manual

Logistic

EAN / GTIN: 4026397543131

Weight: 0,44 kg

Length: 0.12 m

Width: 0.13 m

Height: 0.07 m

Technical specifications:

Power supply:	230 V AC, 50 Hz
Power consumption:	8 W
IP classification:	IP20
Protection class:	Protection class I
Power connection:	Fixed power supply cord with safety plug

Cable length:	Approx. 1 m
LED:	3 x 1 W blue (B)
Speed:	1,5 RPM
Maximum load:	3 kg
Max. mirror ball diameter:	30 cm (EUROLITE)
Dimensions:	Height: 5,5 cm Diameter: Ø 11 cm
Weight:	410 g