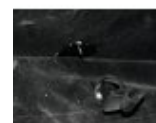
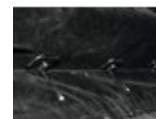
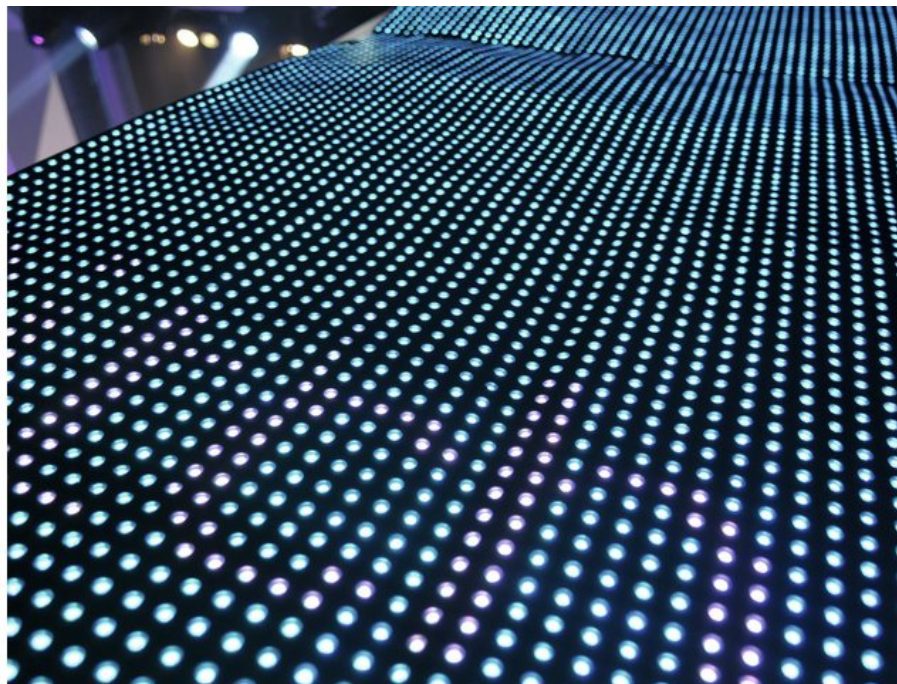


EUROLITE LSD-18.25 MK2 custom / per m²

Custom sizes for LED soft displays of the LSD series

Art. No.: 80503223

GTIN: 4026397453225



The article is no longer in our assortment.

Features:

- Fully assembled LED soft displays produced according to your individual dimensions - contact our sales team!
- Production of model LSD-25 available in steps of 0.40 meters (equals 16 pixels)
- Maximum size 1280 x 1024 pixels
- For quick 2-man installation and uncomplicated transport, a size of up to 5 meters per display is recommended
- Price per square meter
- Available in black and white
- Regular delivery time by sea freight: about 9 weeks
- Short-term delivery by air freight: about 4 weeks

Logistic

EAN / GTIN: 4026397453225

Weight: 18,00 kg

Length: 0.00 m

Width: 0.00 m

Height: 0.00 m

Technical specifications:

Power supply:	100-240 V AC, 50/60 Hz
Power consumption:	100,00 W
IP classification:	IP44
Dimensions:	Width: 1,28 m Height: 2,56 m
Weight:	18,00 kg
Resolution (W x H):	64 x 64 pixels
Pixel pitch:	18.25 mm

Pixel density:	3002/m ²
Pixel configuration:	tri-color RGB LEDs, type SMD 5050
Lifetime:	approx. 100000 hours
Display port:	DVI/RJ45
Display mode:	synchronous to video source
Drive mode:	static
Screen resolution:	rec. 1024 x 768, max. 1280 x 1024
Brightness:	3680 cd/m ² (nits)
Viewing angle:	120°
Frame rate:	60 Hz
Data refresh rate:	600 Hz
Colors:	16.7 million (R 256, G 256, B 256)
Protection grade:	IP44
Operating temperature:	-10 to 45 °C
Humidity:	10 to 90 %
Dimensions (W x H):	1170 x 1170 mm
Legal specifications	
Special product:	Not designed for household room illumination
Intended use:	Show effect lighting