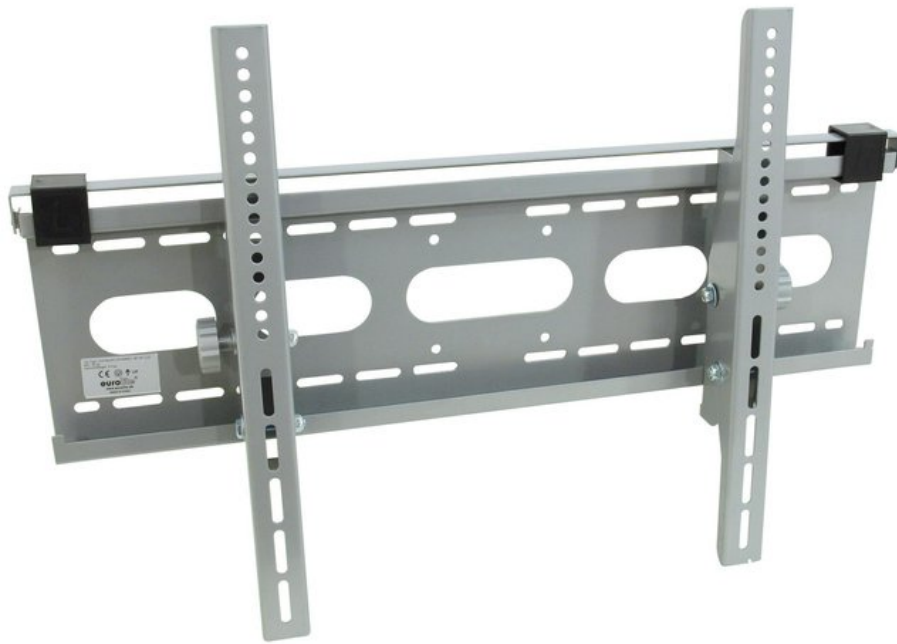


## EUROLITE LCH-36/55M2 Wall mount for monitors

Wall mount

Art. No.: 81012421

GTIN: 4026397365849



**The article is no longer in our assortment.**

### Features:

- Wall mount for LCD monitors with a diagonal screen size of 915 mm (36") to 1400 mm (55")
- Adjustable tilting angle
- Stable metal version
- VESA standard
- Mounting materials included in the delivery

### Logistic

EAN / GTIN: 4026397365849

Weight: 5,80 kg

Length: 0.78 m

Width: 0.23 m

Height: 0.08 m

### Technical specifications:

Maximum load BGV C1 (8-fold):	30 kg
Max. load WLL (4-fold):	60 kg
Distance to wall:	75 mm
Dimensions:	Width: 49,8 cm Depth: 7,5 cm Height: 70 cm
Weight:	5,30 kg
Interface dimensions:	498 x 700 mm
Distance to wall:	75 mm
Dimensions:	748 x 498 x 75 mm