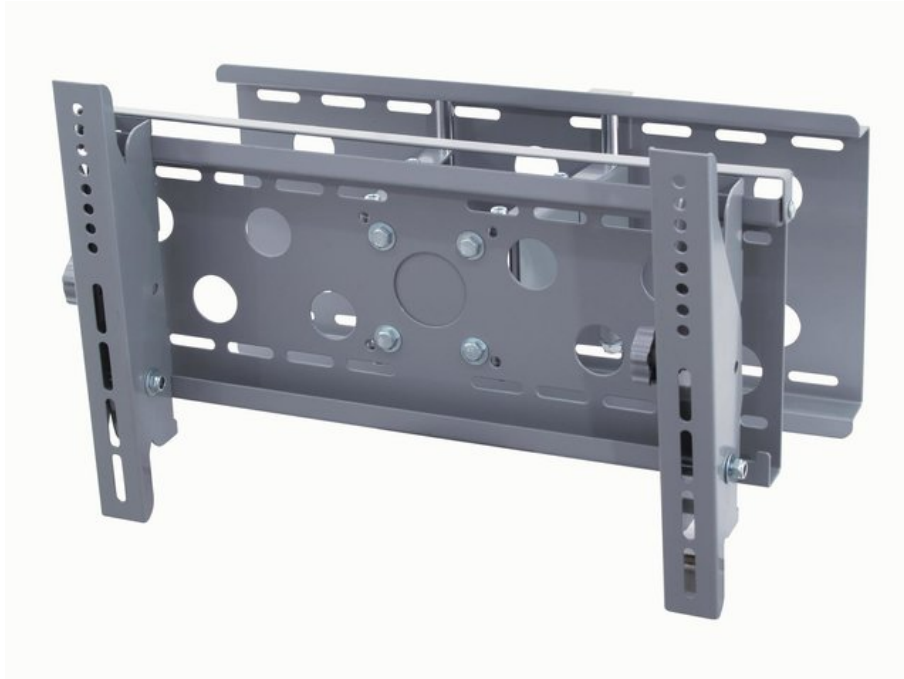


## EUROLITE LCHP-23/37M Wall mount for monitors

Wall mount

Art. No.: 81012425

GTIN: 4026397295504



**The article is no longer in our assortment.**

### Description:

Hold on tight!

Concerning televisions, it is the last thing: LCD-devices. No surprise, when you think of the pin sharp, flicker- and contortion-free picture, that sets itself apart from conventional screens. The small installation depth is definitely another advantage. Due to their extremely flat form, the screens - similar to pictures - can be hung up to walls. But without the appropriate holder it will not work. So let us take a look at our LCHP-Mount, that will help you to place your TV securely and exactly there where you want it to be. Our device is dimensioned for different screens, it can carry 75 kilograms and features another useful detail: the construction is not only able to adjust the inclination, but also to change the distance to the wall by simply pulling it out. Now you are even more flexible and really can enjoy the new technology.

### Logistic

EAN / GTIN: 4026397295504

Weight: 11,10 kg

Length: 0.56 m

Width: 0.29 m

Height: 0.12 m

### Features:

- Wall mount for LCD monitors with a diagonal screen size of 585 mm (23") to 940 mm (37")
- Adjustable tilting angle
- Extendable
- Solid metal version
- VESA standard

### Technical specifications:

Maximum load BGV C1 (8-fold):	30 kg
Distance to wall:	95 mm
VESA interface max.:	48 cm x 34,8 cm

Dimensions:

Width: 52,8 cm

Depth: 9,5 cm

Height: 34,8 cm

---

Weight:

10 kg

---