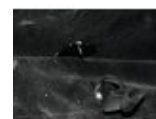
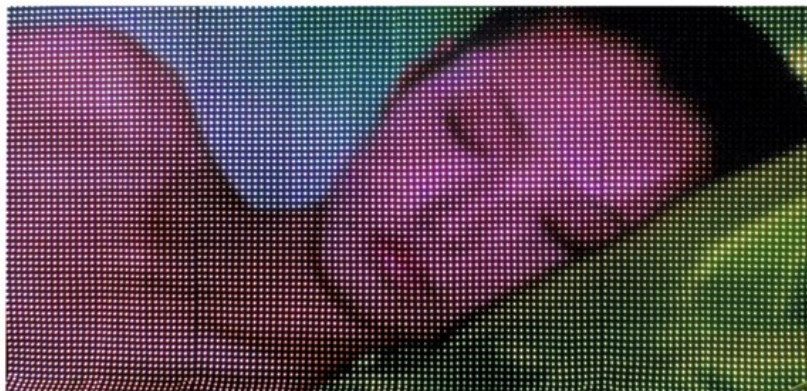


## EUROLITE LSD-20 IP44 (H)2.56m x (W)1.28m

Affichages LED souples

Réf. : 80503225

GTIN: 4026397390964



## L'article n'est plus disponible.

### Description:

LSD, that are our LED Soft Displays, which start a competition with stiff LED panels. They are flexible curtains with a very low own weight. Just like a carpet they can be coiled up (some may only be fold up). So transport as well as installation are alleviated enormously. Even huge surfaces can quickly be mounted by only two persons - to connect the different curtains is a child's play, by the way. Whether for clubs, halls, open airs, shop windows or exhibitions, the LSD curtains are suitable for any advertising and entertaining purposes. They meet the IP Code 44 and thus can be used outdoors. Ultra-bright tri-color SMD RGB LEDs are installed. They are capable of outputting up to 16.7 million colors, The real pixel pitch - one LED is able to deliver all RGB colors - guarantees high resolution full-color projection leaving nothing to be desired. By the way, the curtains are available in different pixel pitches. Six versions are offered: with a pitch of 100 mm, 75 mm, 50 mm, 37.5 mm, 25 mm and 20 mm. Customized LSDs can also be ordered. All versions can show videos, graphic applications and backdrops. You should mind to adapt the crowd's distance to the respective resolution. A standard laptop with 1 Gbps NIC and the optionally available AIO network control system is everything you need for controlling the curtains. The latter consists of a network interface and the LED Show T9 software. So, the control does not demand a huge effort. A real benefit especially for mobile use. Compatibility to other media software programs, such as MADRIX, is given as well. Moreover, by means of Sending and Receiving card you can operate the curtains via DVI. Quite important when you decide to work with video processors and pictures of live cams should be included.

### Caractéristiques:

- Flexible displays with tri-color RGB LEDs (type SMD 5050) for bright and colorful projection of videos and graphics
- Modular display concept allows the build-up of large areas, ideal for outdoor use with large viewing distances
- Bendable and foldable PVC material suitable for various shapes, e.g. columns, circles, angles

### Logistique

EAN / GTIN: 4026397390964

Poids: 34,00 kg

Longueur: 1.33 m

Largeur: 0.68 m

Hauteur: 0.20 m

Article encombrant



- Fast and uncomplicated installation, indoor and outdoor (IP44)
- Truss suspension via built-in belts
- Water-repellent and flame-resistant
- Low weight and small volume for convenient transport
- Easy maintenance - LEDs can be replaced without difficulty
- Controllable via optional network components and PC software
- All-in-one control system T9 (80503301): network interface and software LED Show T9 - ideal system for mobile use with notebooks with 1-gigabit NIC
- Control system LED studio: receiver interface (80503311), PCI sending card and software LED Studio (80503130)
- Recommended media software: MADRIX
- Switch-mode power supply for operation between 100 and 240 Volts
- Power output for passing on the power supply
- Available in different sizes and pixel pitches
- Custom sizes available upon request (in 0.32 m units)
- 8192 LED puissantes SMD 5050 3in1 TCL RGB (mélange de couleurs homogène)
- Vous trouverez de plus amples informations sur ce produit dans la rubrique « Téléchargements » de la fiche technique

## Données techniques:

Alimentation électrique:	100-240 V CA, 50/60 Hz
Puissance totale de raccordement:	80,00 W
Type de protection:	IP44
LED:	8192 x SMD 5050 3in1 TCL RGB (mélange de couleurs homogène)
Durée de vie:	100000 h
Dimension:	Largeur : 1,28 m Hauteur : 2,56 m
Poids:	29,19 kg
Resolution (W x H):	64 x 128 pixels
Pixel pitch:	20 mm
Pixel density:	2500/m²
Pixel configuration:	tri-color RGB LEDs, type SMD 5050
Display port:	DVI/RJ45
Display mode:	synchronous to video source
Drive mode:	static
Screen resolution:	rec. 1024 x 768, max. 1280 x 1024
Brightness:	2700 cd/m² (nits)
Viewing angle:	120°
Frame rate:	60 Hz
Data refresh rate:	600 Hz
Colors:	16.7 million (R 256, G 256, B 256)
Operating temperature:	-10 to 45 °C
Humidity:	10 to 90 %
Spécifications juridiques	
Produit spécial:	Non destiné à l'éclairage de la pièce dans les ménages
Utilisation:	Éclairage pour effets de spectacle