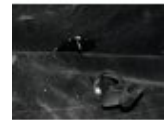


EUROLITE LSD-20 MK2 custom / per m²

Custom sizes for LED soft displays of the LSD series

Réf. : 80503226

GTIN: 4026397542547



L'article n'est plus disponible.

Description:

Legal LSD trip!

It's out of the question, that you don't need pills or illegal substances to expand your conscious. Some LSD from Eurolite also serves the purpose. LSD, that are our new LED Soft Displays, which start a competition with stiff LED panels. They are flexible curtains with a very low own weight. Just like a carpet they can be coiled up (some may only be fold up). So transport as well as installation are alleviated enormously. Even huge surfaces can quickly be mounted by only two persons - to connect the different curtains is a child's play, by the way. Whether for clubs, halls, open airs, shop windows or exhibitions, the LSD curtains are suitable for any advertising and entertaining purposes. They meet the IP Code 44 and thus can be used outdoors. Ultra-bright tri-color SMD RGB LEDs are installed. They are capable of outputting up to 16.7 million colors, The real pixel pitch - one LED is able to deliver all RGB colors - guarantees high resolution full-color projection leaving nothing to be desired.

By the way, the curtains are available in different pixel pitches. Six versions are offered: with a pitch of 100 mm, 75 mm, 50 mm, 37.5 mm, 25 mm and 20 mm. Customized LSDs can also be ordered. All versions can show videos, graphic applications and backdrops. You should mind to adapt the crowd's distance to the respective resolution. A standard laptop with 1 Gbps NIC and the optionally available AIO network control system is everything you need for controlling the curtains. The latter consists of a network interface and the LED Show T9 software. So, the control does not demand a huge effort. A real benefit especially for mobile use. Compatibility to other media software programs, such as MADRIX, is given as well. Moreover, by means of Sending and Receiving card you can operate the curtains via DVI. Quite important when you decide to work with video processors and pictures of live cams should be included.

Logistique

EAN / GTIN: 4026397542547

Poids: 10,00 kg

Longueur: 0.00 m

Largeur: 0.00 m

Hauteur: 0.00 m

Caractéristiques:

- Fully assembled LED soft displays produced according to your individual dimensions - contact our sales team!
- Production of model LSD-20 available in steps of 0.32 meters (equals 16 pixels)
- Maximum size 1280 x 1024 pixels
- For quick 2-man installation and uncomplicated transport, a size of up to 5 meters per display is recommended
- Price per square meter
- Available in black and white
- Regular delivery time by sea freight: about 9 weeks
- Short-term delivery by air freight: about 4 weeks
- Vous trouverez de plus amples informations sur ce produit dans la rubrique « Téléchargements » de la fiche technique

Données techniques:

Alimentation électrique:	100-240 V CA, 50/60 Hz
Puissance totale de raccordement:	80,00 W
Type de protection:	IP44
Dimension:	Largeur : 1,28 m Hauteur : 2,56 m
Poids:	10,00 kg
Resolution (W x H):	64 x 128 pixels
Pixel pitch:	20 mm
Pixel density:	2500/m ²
Pixel configuration:	tri-color RGB LEDs, type SMD 5050
Lifetime:	approx. 100000 hours
Display port:	DVI/RJ45
Display mode:	synchronous to video source
Drive mode:	1/8 scan
Screen resolution:	max. 1280 x 1024 (LED Studio) max. 1024 x 896 (LED Show T9)
Brightness:	2700 cd/m ² (nits)
Viewing angle:	120°
Frame rate:	60 Hz
Data refresh rate:	600 Hz
Colors:	16.7 million (R 256, G 256, B 256)
Protection grade:	IP44
Operating temperature:	-10 to 45 °C
Humidity:	10 to 90 %
Dimensions (W x H):	1280 x 2560 mm
Spécifications juridiques	
Produit spécial:	Non destiné à l'éclairage de la pièce dans les ménages
Utilisation:	Éclairage pour effets de spectacle