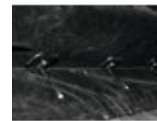
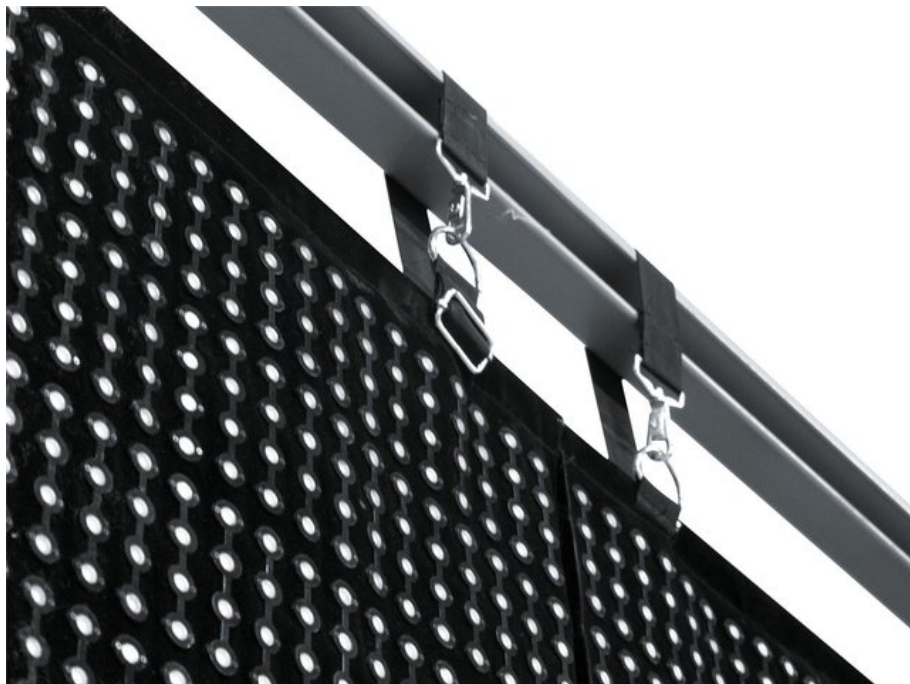


EUROLITE LSD-20E MK2 (H)2,56m x (W)1,28m

LED soft displays (economy version)

Réf. : 80503270

GTIN:



L'article n'est plus disponible.

Caractéristiques:

- Inexpensive economy version of the successful LED soft displays
- Flexible displays with tri-color RGB LEDs (type SMD 3528) for bright and colorful projection of videos and graphics
- Modular display concept allows the build-up of large areas, ideal for outdoor use with large viewing distances
- Bendable and foldable PVC material suitable for various shapes, e.g. columns, circles, angles
- With new angled connector system
- Fast and uncomplicated installation, indoor and outdoor (IP44)
- Truss suspension via built-in belts
- Water-repellent and flame-resistant
- Low weight and small volume for convenient transport
- Easy maintenance - LEDs can be replaced without difficulty
- Controllable via optional network components and PC software
- All-in-one control system T9 (80503301): network interface and software LED Show T9 - ideal system for mobile use with notebooks with 1-gigabit NIC
- Control system LED studio: receiver interface (80503311), PCI sending card and software LED Studio (80503130)
- Recommended media software: MADRIX
- Switch-mode power supply for operation between 100 and 240 volts
- Power output for passing on the power supply
- Available in different sizes and pixel pitches
- Custom sizes available upon request (in 0.32 m units)

Logistique

Données techniques:

Alimentation électrique:	100-240 V CA, 50/60 Hz
Type de protection:	IP44
Dimension:	Largeur : 1,28 m Hauteur : 2,56 m
Power consumption:	60 W/m ²
Resolution (W x H):	64 x 128 pixels
Pixel pitch:	20 mm
Pixel density:	2500/m ²
Pixel configuration:	tri-color RGB LEDs, type SMD 3528
Lifetime:	approx. 100000 hours
Display port:	DVI/RJ45
Display mode:	synchronous to video source
Drive mode:	1/8 scan
Screen resolution:	max. 1280 x 1024 (LED Studio) max. 1024 x 896 (LED Show T9)
Brightness:	940 cd/m ² (nits)
Viewing angle:	120°
Frame rate:	60 Hz
Data refresh rate:	600 Hz
Colors:	16.7 million (R 256, G 256, B 256)
Protection grade:	IP44
Operating temperature:	-10 to 45 °C
Humidity:	10 to 90 %
Dimensions (W x H):	1280 x 2560 mm
Weight:	7.8 kg/m ²
Spécifications juridiques	
Produit spécial:	Non destiné à l'éclairage de la pièce dans les ménages
Utilisation:	Éclairage pour effets de spectacle