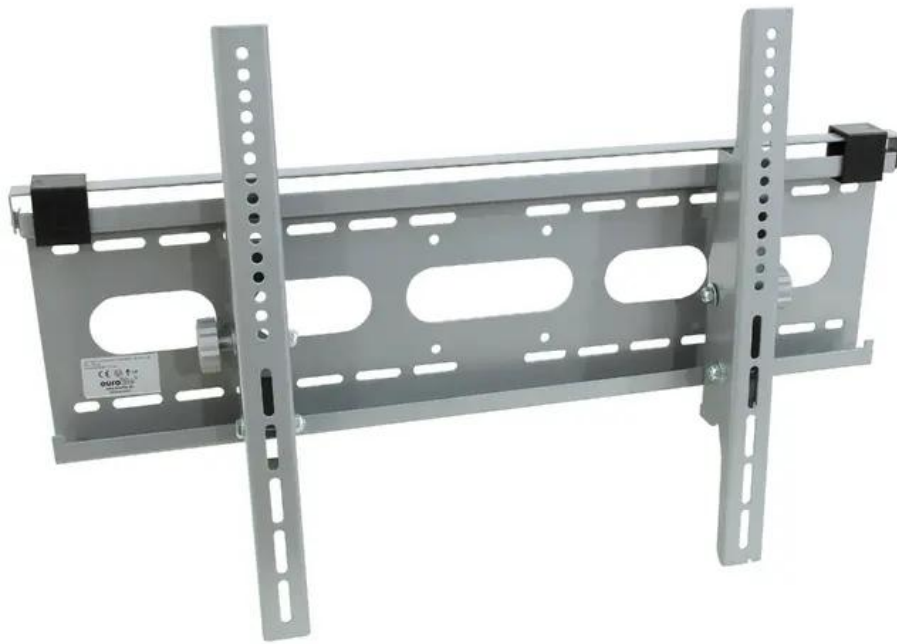


EUROLITE LCH-36/55M2 Wall mount for monitors

Wall mount

Art.n.: 81012421

GTIN: 4026397365849



Features :

- Wall mount for LCD monitors with a diagonal screen size of 915 mm (36") to 1400 mm (55")
- Adjustable tilting angle
- Stable metal version
- VESA standard
- Mounting materials included in the delivery

Logistica

EAN / GTIN: 4026397365849

Peso : 5,80 kg

Lunghezza : 0.78 m

Larghezza : 0.23 m

Altezza : 0.08 m

Dati tecnici :

Carico massimo BGV C1 (8 volte sup.):	30 kg
Carico massimo WLL (4 volte sup.):	60 kg
Distanza dalla parete:	75 mm
Misure:	Larghezza: 49,8 cm Profondità: 7,5 cm Altezza: 70 cm
Peso:	5,30 kg
Interface dimensios:	498 x 700 mm
Distance to wall:	75 mm
Dimensions:	748 x 498 x 75 mm

Contenuto della confezione:
